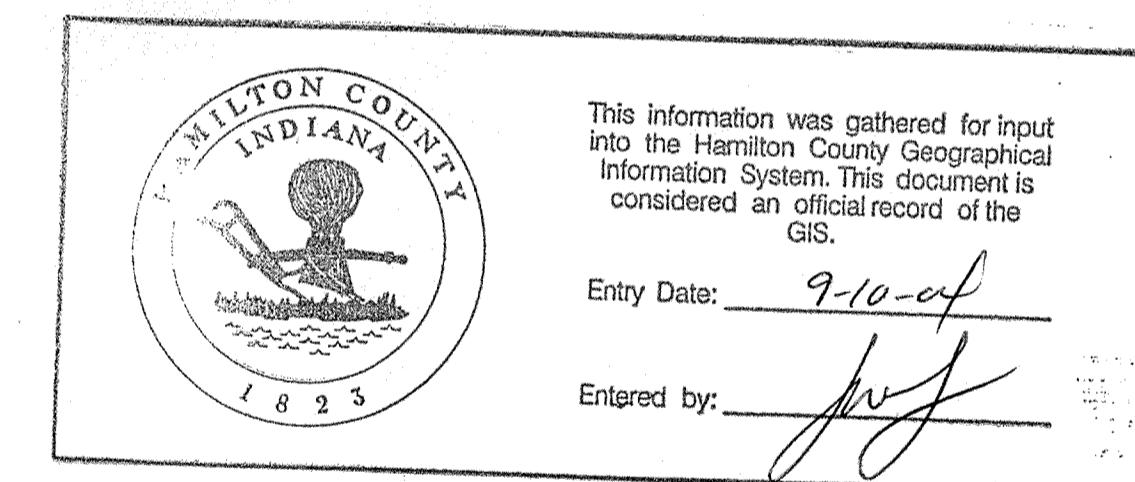


PLAN HOLD CORPORATION * IRVINE, CALIFORNIA
RECORDED BY NUMBER 072041
RECORD DATE OF RECORDED DATE

TOWN OF ARCADIA, INDIANA

PHASE I - MAIN STREET COMBINED SEWER SEPARATION PROJECT



ARCHITECTS ENGINEERS PLANNERS

INDIANAPOLIS, INDIANA

CERTIFIED
HNTB CORPORATION
BY:

[Signature]
HAROLD E. DUNGAN, P.E., PROJECT MANAGER
REGISTERED ENGINEER NO. 16541
STATE OF INDIANA



REF.: [Signature]
ROGER C. WARD, P.E., VICE PRESIDENT

PLANS & SPECIFICATIONS APPROVED
ON MARCH 16th, 1998 BY THE
TOWN BOARD

[Signature]
MITCHELL RUSSELL

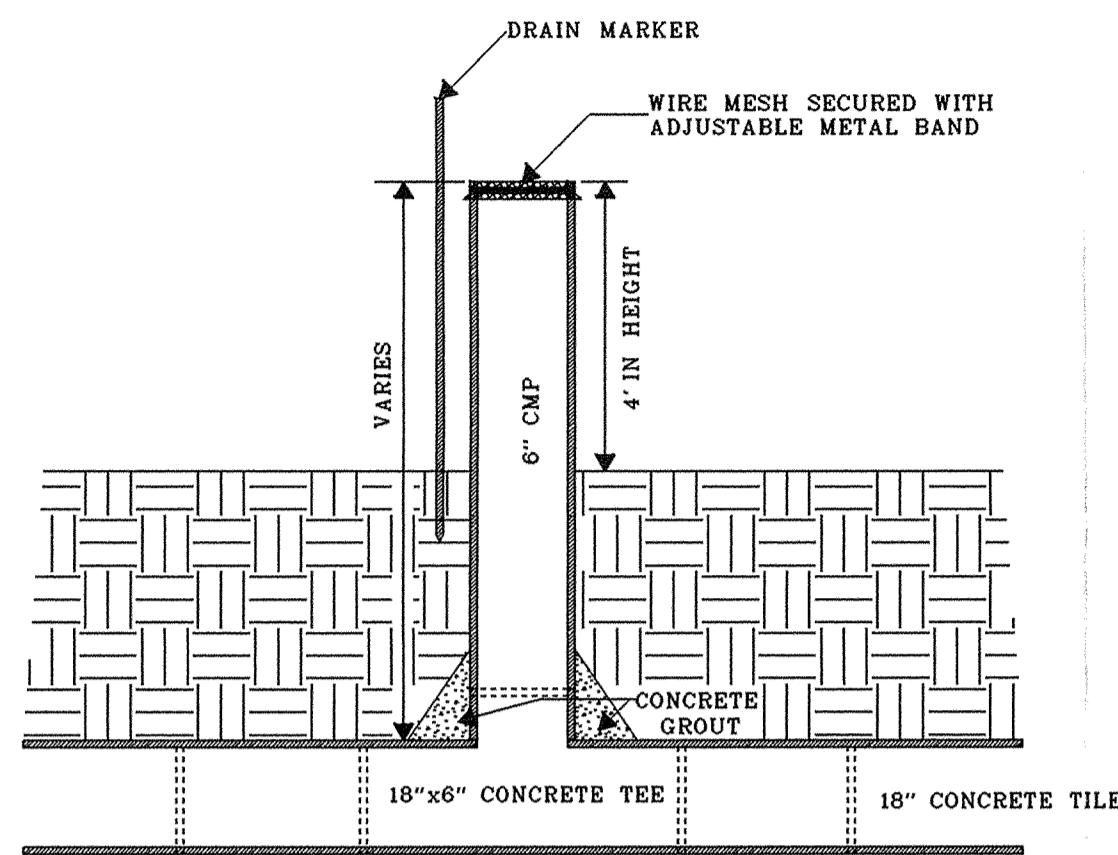
[Signature]
WILLIAM COOK

[Signature]
BRENTON DeMOSS

RECORD DRAWING
WARNING: This is part of a record document. Record documents are based on reports submitted by others. HNTB cannot assume nor assume responsibility or liability for the accuracy of record documents. Users of record documents are cautioned and advised to obtain independent verification of actual conditions.

SET NO.

file name: I:\ENVIRON\28066\SEWER\SHI_1.dwg 1:1
Tuesday, August 22, 2000 11:15:06 AM RMC:cltlan i:\pilot\cfr-will.pen

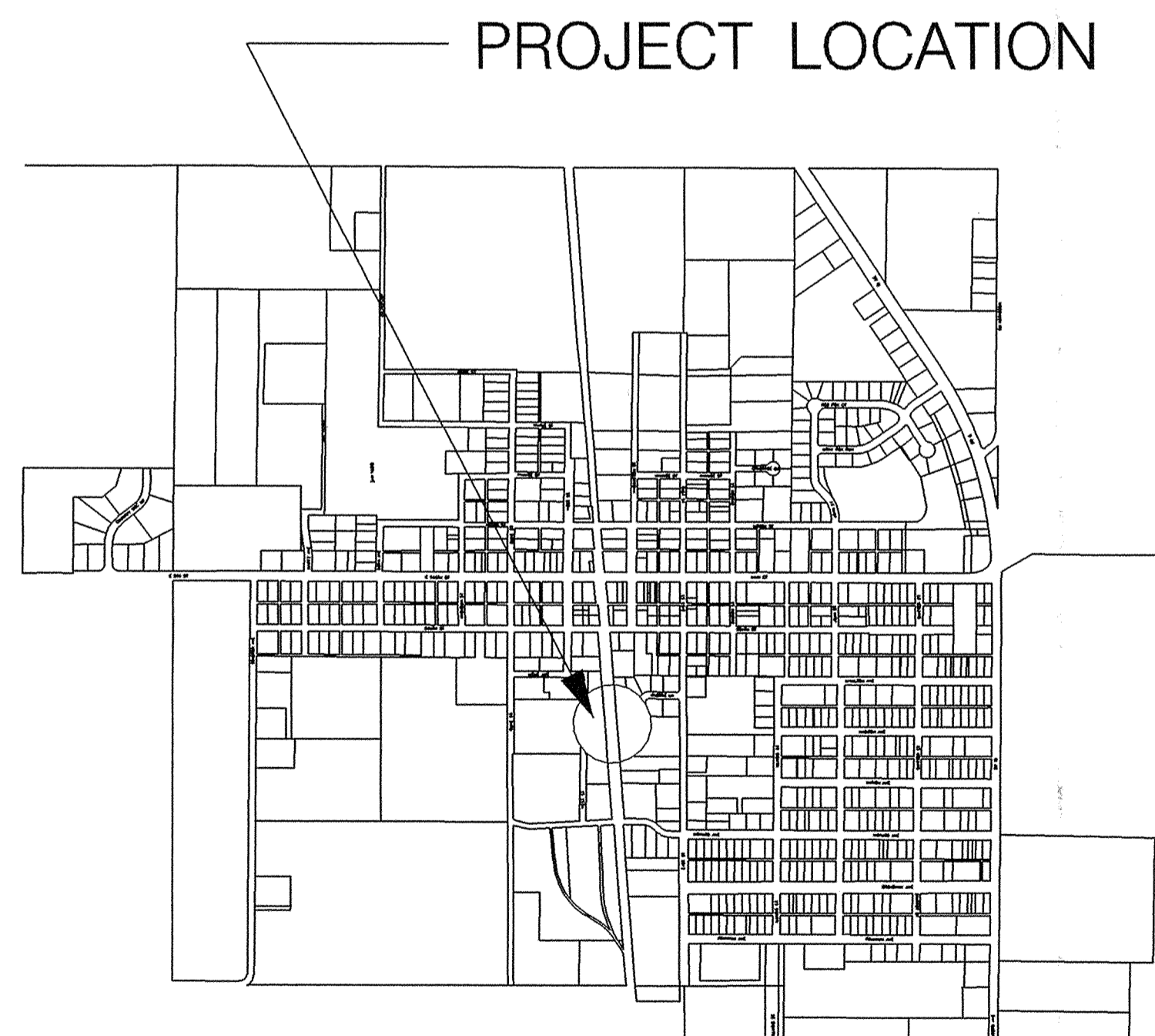


NOTE: ADAPTER MAY BE REQUIRED FOR 6" CMP TO TEE.

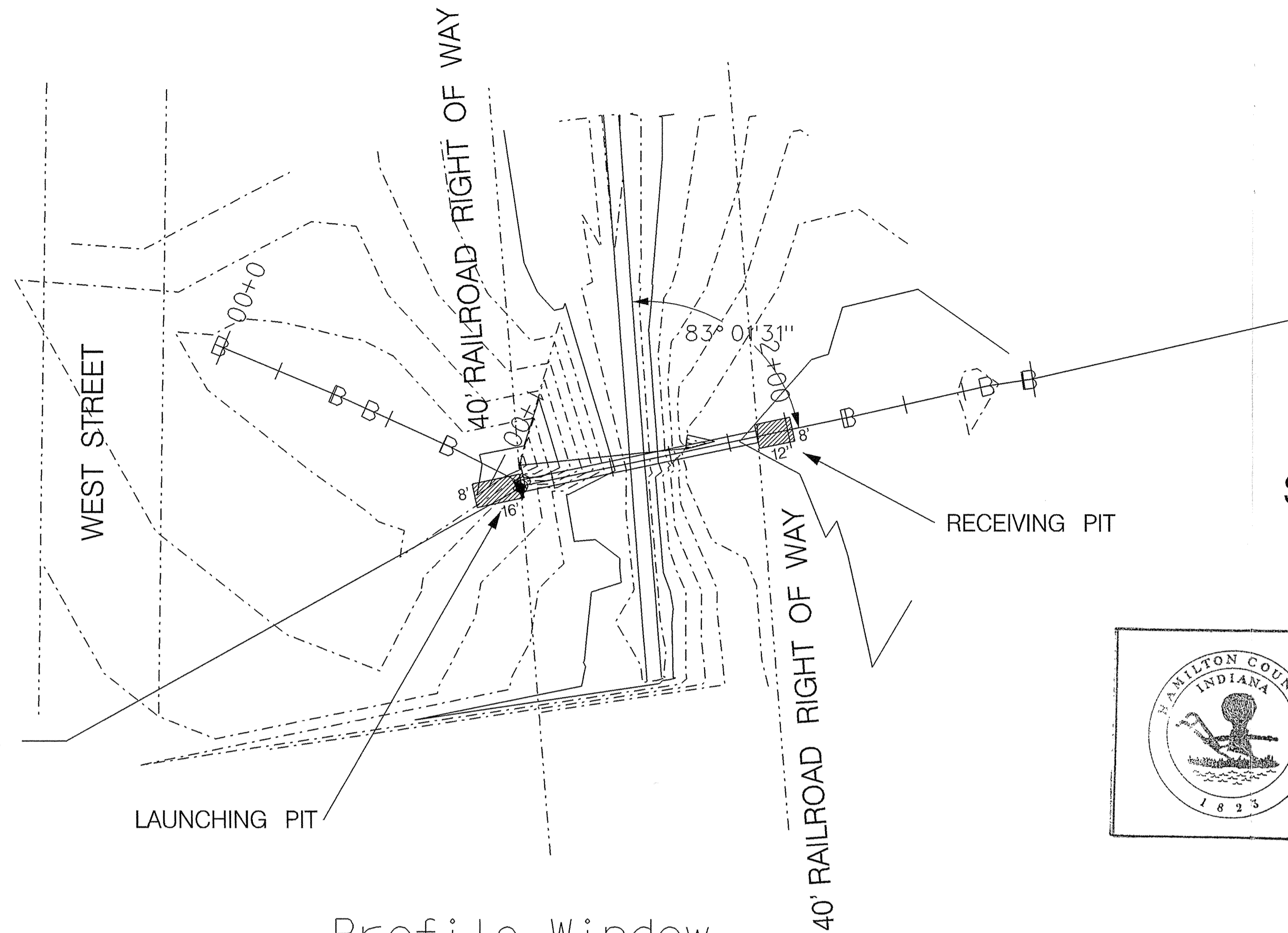
BREATHER DETAIL FOR CONCRETE TILE

STR. NO. 10

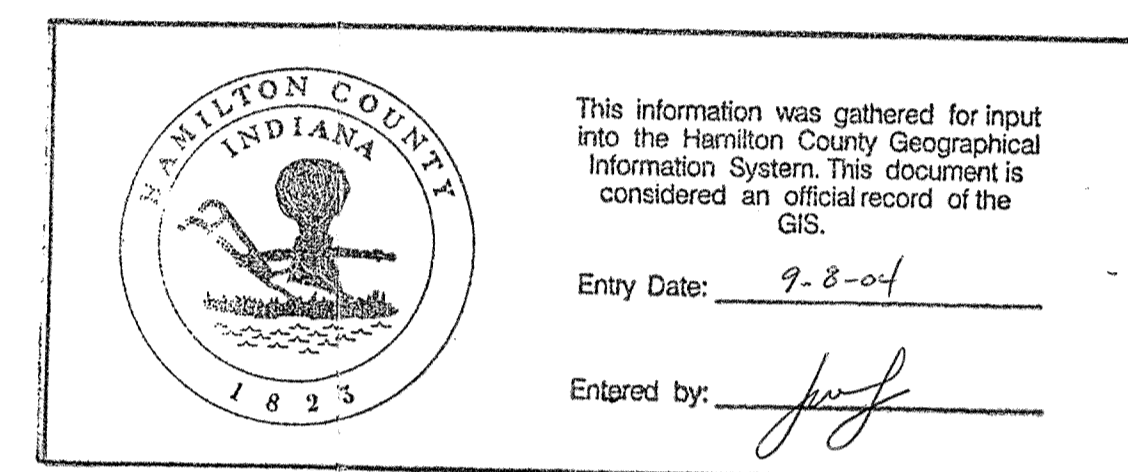
BREATHER PIPE
(LOCATED OUTSIDE OF RW) & 80 LFT OF 18" OF R.C. PIPE REQ'D. ASTM C-76, CLASS V, WALL B
LIFT HOLES WILL BE GROUTED



TOWN OF ARCADIA LOCATION MAP

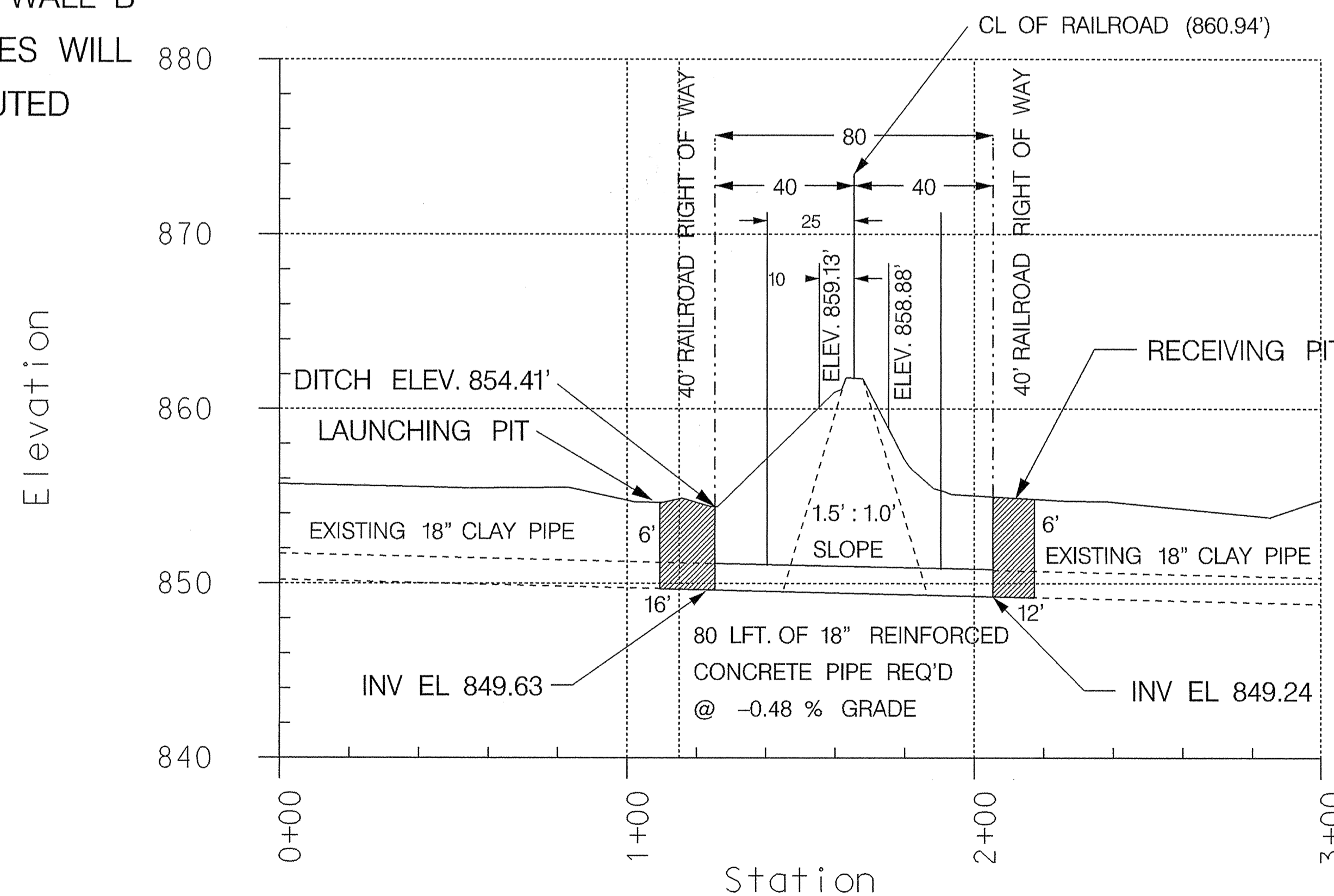


Profile Window



GENERAL NOTES:

1. NO CARRIER PIPE REQ'D. PIPE TO BE JACKED REINFORCED CONCRETE PIPE.
2. BREATHER, LAUNCHING AND RECEIVING PITS TO OUTSIDE EXISTING RAILROAD RW.
3. CONTRACTOR SHALL NOTIFY THE COUNTY SURVEYOR'S OFFICE, HOOSIER HERITAGE PORT AUTHORITY AND BUTLER FAIRMAN & SEUFERT, INC. A MINIMUM OF 72 HOURS IN ADVANCE OF COMMENCEMENT OF CONSTRUCTION.
4. CONSTRUCTION ENGINEERING TO BE PERFORMED BY SURVEYOR'S OFFICE.
5. NO ADDITIONAL COMPENSATION TO BE ALLOWED FOR BORING PITS TO BE INCLUDED IN THE COST OF OTHER ITEMS.
6. UTILITIES TO BE CONTACTED FOR LOCATION OF SAID UTILITIES. ANY CONFLICTS TO BE BROUGHT TO THE ATTENTION OF ENGINEER.
7. FINAL GRADING AND SEEDING WILL NOT BE PAID FOR DIRECTLY; HOWEVER TO BE INCLUDED IN THE COST OF OTHER ITEMS.
8. ALL LIFT HOLES SHALL BE GROUTED.



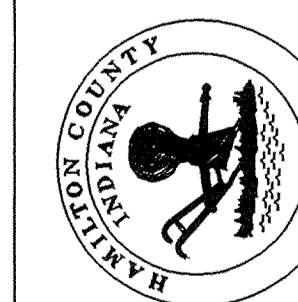
Project Name:
**WILSON NAGLE DRAIN
RAILROAD CROSSING**

DGN / WILSON-NAGLE-RR
revised: 8-JUN-2000 dmw

PLOT DATE: 08-JUN-2000

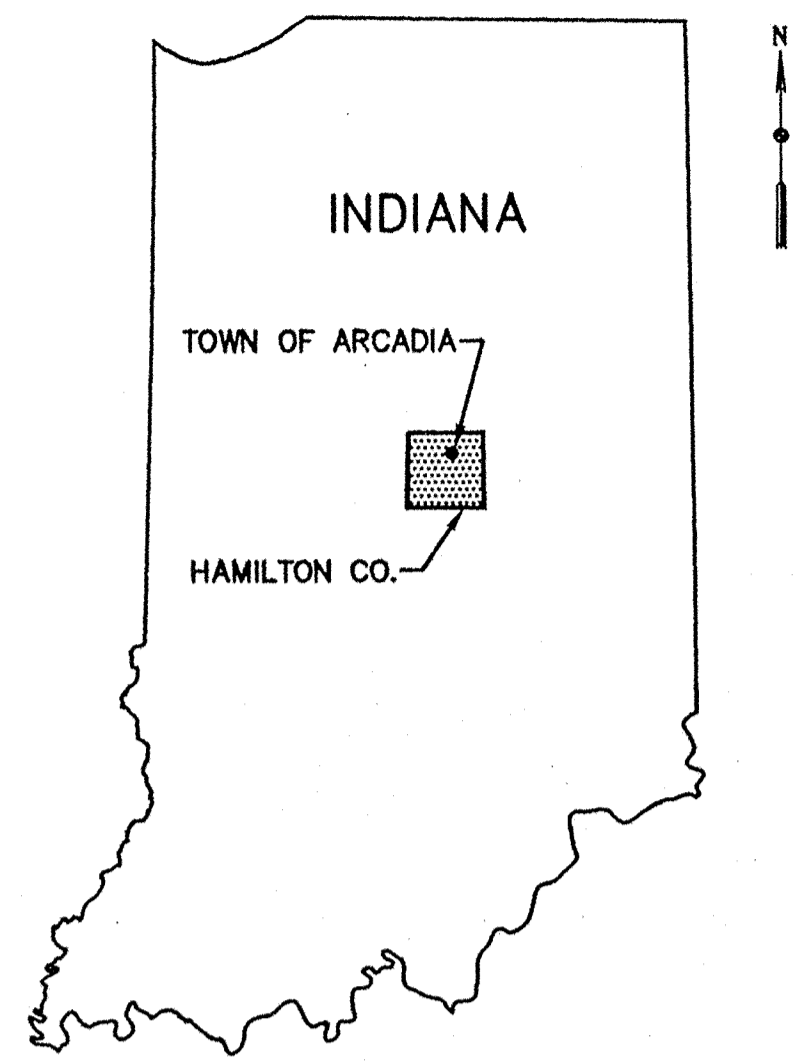
HAMILTON COUNTY, INDIANA

Hamilton County Surveyor's Office
Hamilton County Government and
Judicial Center
One Hamilton County Square, Suite 146
Noblesville, IN 46060

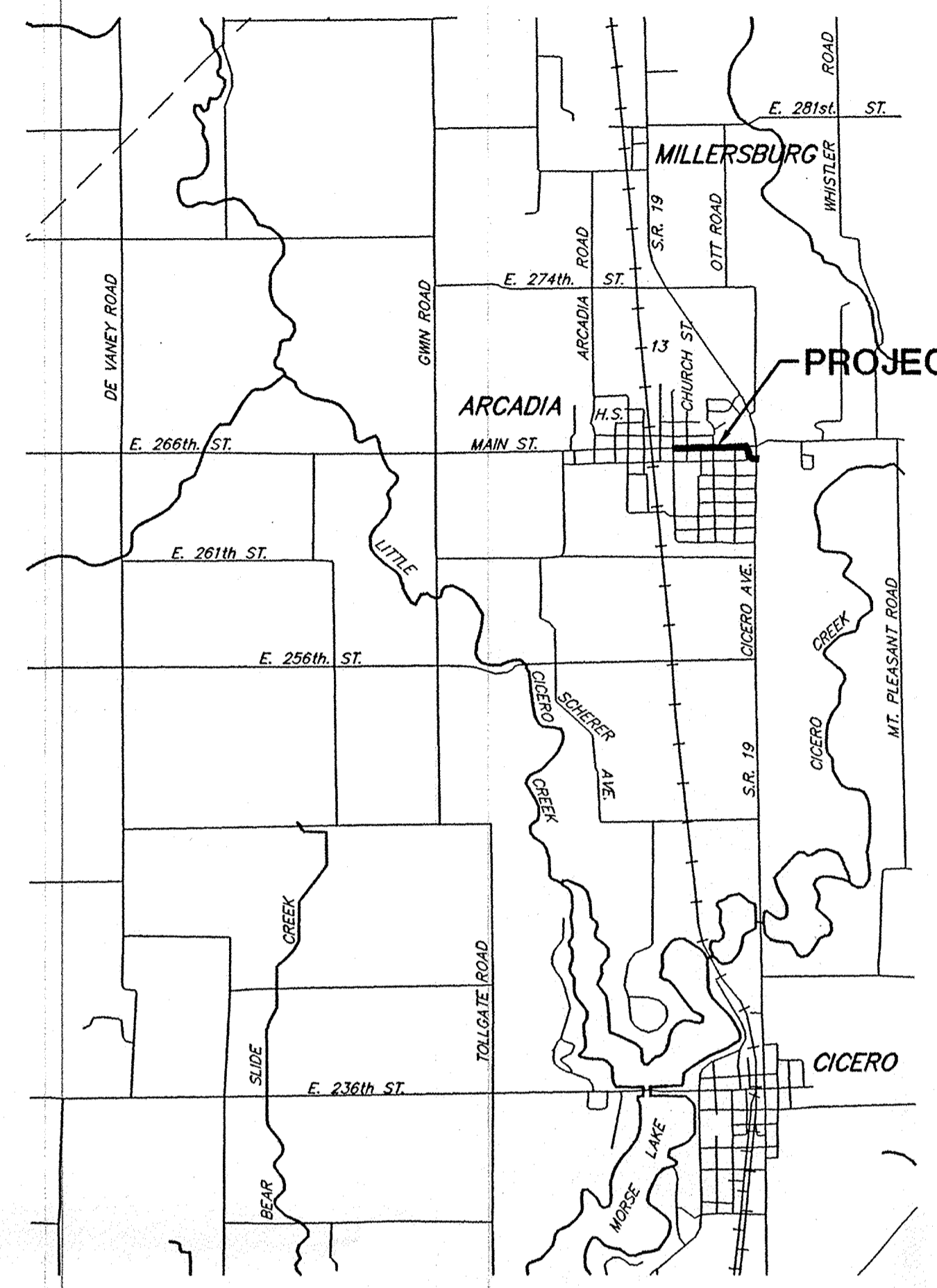


SHEET NO.

1



VICINITY MAP



LOCATION PLAN

DRAWING INDEX

SHT. No.	DESCRIPTION
1	TITLE SHEET
2	VICINITY MAP, LOCATION PLAN, DRAWING INDEX, PLAN SYMBOLS & MISCELLANEOUS INFORMATION
3	PLAN & PROFILE, STATION 9+03 TO 14+25 (S.R. 19)
4	PLAN & PROFILE, STATION 14+25 TO 22+72 (MAIN ST.)
5R	PLAN & PROFILE, STATION 22+72 TO 27+02 (MAIN ST.)
6	MISCELLANEOUS SEWER DETAILS
7	MISCELLANEOUS SEWER DETAILS
8	TRAFFIC CONTROL PLAN - STATE ROAD 19

GENERAL NOTES:

- THE LOCATION, SIZE AND ELEVATION OF EXISTING UTILITIES, WHERE SHOWN ON THE DRAWINGS, WERE OBTAINED FROM THE UTILITY COMPANIES AND ASSUMED TO BE CORRECT, BUT SHALL BE VERIFIED BY THE CONTRACTOR AT THE JOB SITE PRIOR TO THE START OF CONSTRUCTION.
- THE CONTRACTOR SHALL ADEQUATELY PROTECT THE WORK AREA AT ALL TIMES WITH BARRICADES, FENCING, FLASHERS, ECT.
- ALL TRENCHES IN PAVED AREAS (INCLUDING STONE PAVING), OR WITHIN 5 FEET OF PAVED AREAS, SHALL BE BACKFILLED WITH APPROVED GRANULAR MATERIAL AS SPECIFIED IN SECTION 02222.
- THE CONTRACTOR SHALL MAINTAIN THE TRENCHES, ADDING CRUSHED STONE, COLD PATCH, AND GRADING, AS NECESSARY, UNTIL SUFFICIENT SETTLEMENT HAS TAKEN PLACE AND THE FINAL RESTORATION IS MADE.
- THE CONTRACTOR IS ENCOURAGED TO CONFINE HIS CONSTRUCTION ACTIVITIES TO THE SMALLEST AREA PRACTICAL TO LIMIT REQUIRED RESTORATION. LOCAL STREETS DAMAGED BY CONSTRUCTION TRAFFIC WILL BE THE RESPONSIBILITY OF THE CONTRACTOR.
- EXISTING RIGHT OF WAY AND PROPERTY LINES, WHEN SHOWN ON THE DRAWINGS WERE OBTAINED FROM EXISTING MAPS, PROPERTY PLATS, AND DESCRIPTIONS. THE ENGINEER DOES NOT WARRANT THEIR ACCURACY.
- THE CONTRACTOR SHALL HOLD EROSION TO A MINIMUM AS DESCRIBED IN SPECIFICATION SECTION 02101 "TEMPORARY POLLUTION CONTROL"
- THE CONTRACTOR SHALL RESET OR REPLACE IN KIND, ALL TREES AND SHRUBS IN EASEMENT AREAS DAMAGED DURING THE EXECUTION OF THE WORK. CONTRACTOR SHALL RESTORE DISTURBED LAWNS IN EASEMENT AREAS BY REGRADING, PLACING 6-INCHES OF TOP SOIL, SEEDING AND MULCHING. (REF. SPECIFICATION SECTION 02902)

RECORD DRAWING
 WARNING: This is part of a record document. Record documents are based on reports submitted by others. HNTB cannot assume any responsibility or liability for the accuracy of record documents. Users of record documents are cautioned and advised to obtain independent verification of actual conditions.

PLAN SYMBOLS

	EXISTING FEATURES		POINT OF INTERSECTION
	NEW FEATURES		FIRE HYDRANT (F.H.)
	SURVEY LINE (ALONG SEWER LINE)		POWER POLE (PWP)
	EDGE OF PAVEMENT		TREE
	EDGE OF CRUSHED STONE		TRAVERSE POINT WOOD HUB
	EXISTING SANITARY SEWER & M.H.		I.E. INVERT ELEVATION
	NEW STORM SEWER & M.H.		EL. ELEVATION
	NEW CATCH BASIN		CMP CORRUGATED METAL PIPE
	EXISTING BURIED WATER LINE		L.F. LINEAR FEET
	EXISTING BURIED TELEPHONE		T.O.C. TOP OF CONCRETE
	EXISTING BURIED GAS LINE		TBM TEMPORARY BENCH MARK
	EXISTING BURIED ELECTRICAL		BIT. BITUMINOUS PAVEMENT
	FENCE		ASPH. ASPHALT PAVEMENT
	PROPERTY LINES		RCP REINFORCED CONCRETE PIPE
	EASEMENT LINE		VCP VITRIFIED CLAY PIPE
	EXISTING CONTOURS		SOIL BORING NO. 1
	FLOW LINE OF STREAM		GRANULAR BACKFILL REQUIRED

STORM SEWER PIPE SCHEDULE

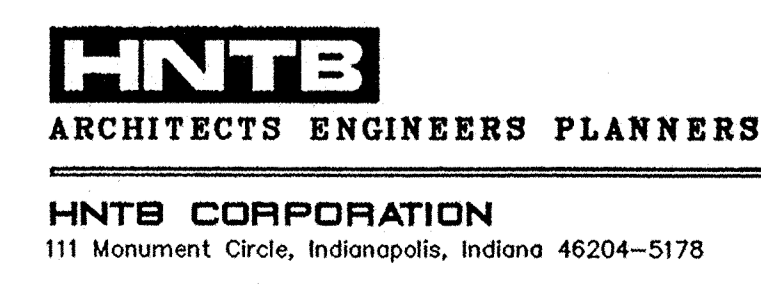
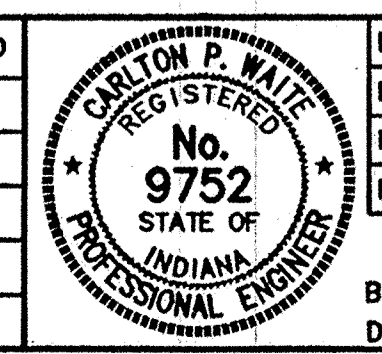
PIPE NUMBER	STRUCTURE		PIPE MATERIAL	INVERT ELEVATION		LENGTH (ft)	SLOPE (ft/ft)	PIPE SIZE	REMARKS
	FROM	TO		FROM	TO				
S-1	OUTFALL	MH-1	RCP	835.55	835.70	97	0.0016	66"	
S-2	MH-1	MH-2	RCP	835.70	836.39	425	0.0016	66"	
S-3	MH-2	MH-3	RCP	840.45	844.33	1277	0.0030	54"	

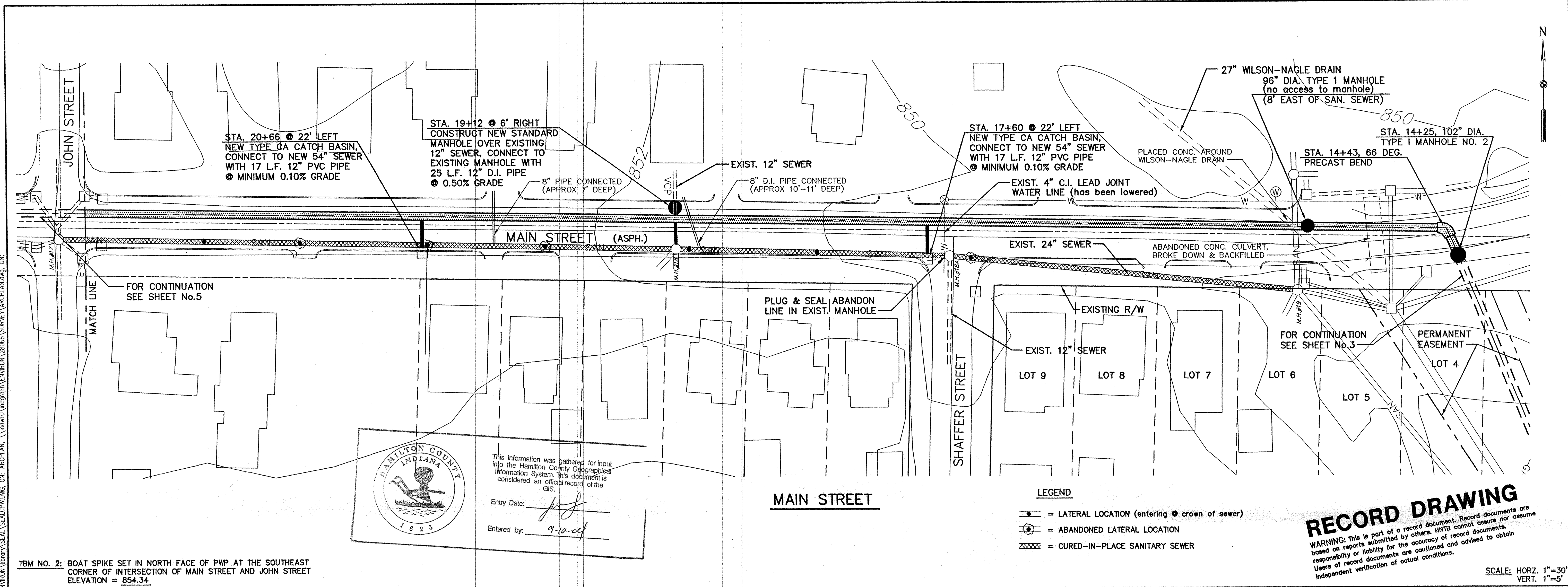
MANHOLE SCHEDULE

MANHOLE NUMBER	COORDINATES		STATION	INVERT ELEVATION	APPROX. RIM EL.	MANHOLE DEPTH (ft)	TOP CASING	BARREL SIZE	REMARKS
	NORTH	SOUTH							
OUTFALL	49605	50123	9+03	835.55					
NO. 1	49618	50027	10+00	835.70	849.00	13.3	N-1772C	102"	
BEND	49670	49958	10+87	835.84					
BEND	49798	49956	12+15	836.05					
NO. 2	49992	49875	14+25	836.39	846.00	9.6	N-1772C	102"	
BEND	50008	49868	14+43	840.50					
NO. 3	50026	48609	27+02	844.33	851.60	11.3	N-1772C	96"	

attached xref's are: P:\PROJECTS\1\ENVIRON\28066\SEWER\PLP\RECORDING_ON_SCALE.PW. I:\ENVIRON\Library\SEAL\SCALE.PWDWG. ON: I:\ENVIRON\28066\SEWER\SHT_2.dwg
 Tuesday, August 22, 2000 11:14:29 AM RmC\Clellan Plot Scale: 1:1 i:\plot\dr-wth.pen

VERIFY SCALES	SYMBOL	REVISIONS	BY	DATE	APPROVED	DESIGNER	C. WAITE	JOB NO.	28066-DS 001-001	TOWN OF ARCADIA, INDIANA	SHEET NO.	2
BAR IS ONE INCH ON ORIGINAL DRAWING.		RECORD DRAWING	RWM	1/7/00	HED	DRAFTING	MCLELLAN			PHASE 1 MAIN STREET COMBINED SEWER SEPARATION PROJECT		
IF NOT ONE INCH ON THIS SHEET, ADJUST SCALES ACCORDINGLY.						PROJ. ENGR.	C. WAITE			VICINITY MAP, LOCATION PLAN, DRAWING INDEX, PLAN SYMBOLS & MISCELLANEOUS INFORMATION		2 OF 8
						PROJ. MGR.	H. DUNGAN					





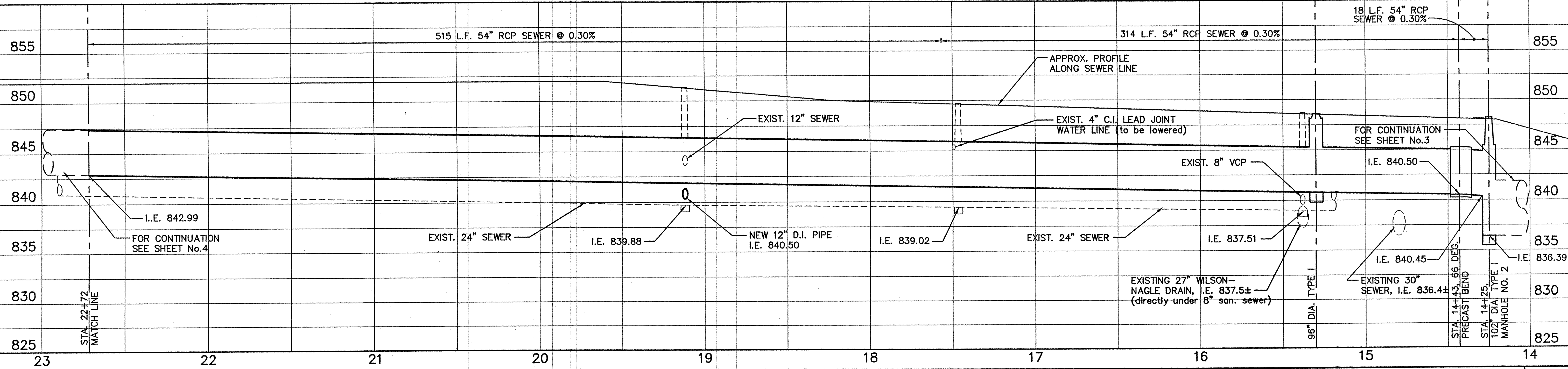
HAMILTON COUNTY INDIANA
 This information was gathered for input into the Hamilton County Geographic Information System. This document is considered an official record of the GIS.
 Entry Date: 9-10-04
 Entered by: [Signature]

TBM NO. 2: BOAT SPIKE SET IN NORTH FACE OF PWP AT THE SOUTHEAST CORNER OF INTERSECTION OF MAIN STREET AND JOHN STREET
 ELEVATION = 854.34

- LEGEND**
- = LATERAL LOCATION (entering @ crown of sewer)
 - = ABANDONED LATERAL LOCATION
 - ▨ = CURED-IN-PLACE SANITARY SEWER

RECORD DRAWING
 WARNING: This is part of a record document. Record documents are based on reports submitted by others. HNTB cannot assume nor assume responsibility or liability for the accuracy of record documents. Users of record documents are cautioned and advised to obtain independent verification of actual conditions.

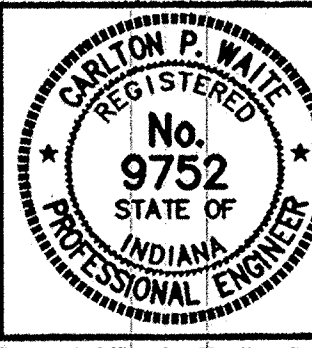
SCALE: HORIZ. 1"=30'
 VERT. 1"=5'



DRAWING FILE: I:\ENVIRON\28066\SEWER\SHT_4.dwg
 XREF: I:\ENVIRON\28066\SEWER\PLAN.dwg
 XREF: I:\ENVIRON\28066\SEWER\PROFILES.dwg
 XREF: I:\ENVIRON\28066\SEWER\SEALS.dwg
 XREF: I:\ENVIRON\28066\SEWER\SEWER.dwg
 XREF: I:\ENVIRON\28066\SEWER\TBM.dwg
 XREF: I:\ENVIRON\28066\SEWER\WATER.dwg

I:\ENVIRON\28066\SEWER\SHT_4.dwg
 Tuesday, August 22, 2000
 11:13:22 AM RMcClellan
 Plot Scale: 1:1 E:\plot\c1r-wdth.pen

VERIFY SCALES	SYMBOL	REVISIONS	BY	DATE	APPROVED
BAR IS ONE INCH ON ORIGINAL DRAWING.		RECORD DRAWING	RWM	1/7/00	HED
0 1"					
IF NOT ONE INCH ON THIS SHEET, ADJUST SCALES ACCORDINGLY.					



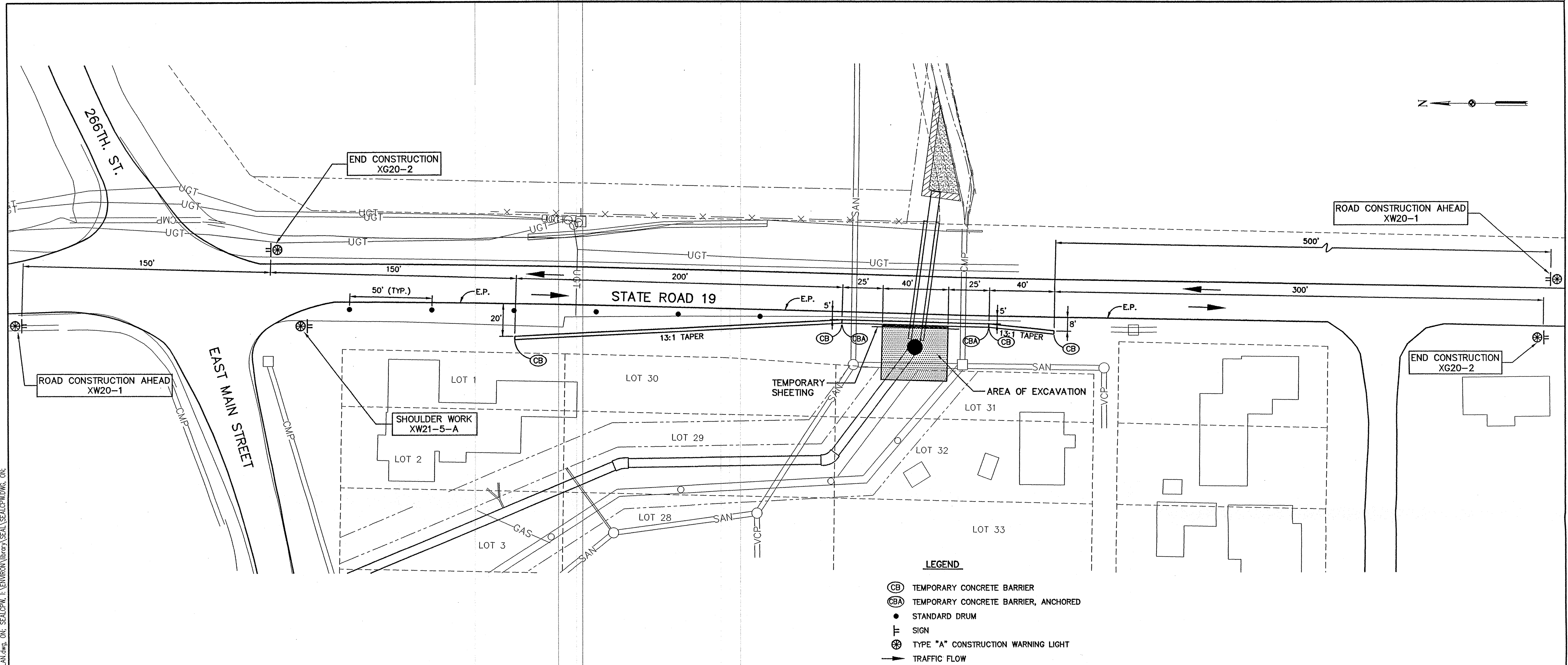
DESIGNER: C. WAITE
 DRAFTING: McCLELLAN
 PROJ. ENGR.: C. WAITE
 PROJ. MGR.: H. DUNGAN
 BY: Carlton P. Waite
 DATE: MARCH 19, 1998

HNTB
 ARCHITECTS ENGINEERS PLANNERS
HNTB CORPORATION
 111 Monument Circle, Indianapolis, Indiana 46204-5178

JOB NO. 28066-DS 001-001
 DATE 3-11-98

TOWN OF ARCADIA, INDIANA
PHASE I MAIN STREET COMBINED SEWER SEPARATION PROJECT
 PLAN & PROFILE
 STATION 14+43 TO 22+72 (MAIN ST.)

SHEET NO. 4
 4 of 8



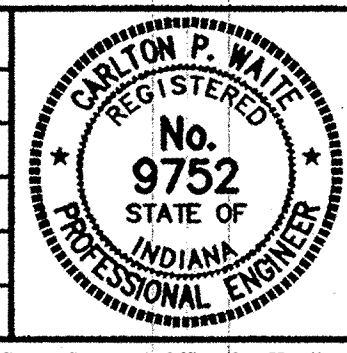
- LEGEND**
- (CB) TEMPORARY CONCRETE BARRIER
 - (CBA) TEMPORARY CONCRETE BARRIER, ANCHORED
 - STANDARD DRUM
 - ⊠ SIGN
 - ⊗ TYPE "A" CONSTRUCTION WARNING LIGHT
 - TRAFFIC FLOW

TRAFFIC CONTROL PLAN
SCALE: 1"=30'

DRAWING FILE: I:\ENVIRON\28066\SEWER\SH_T_8.dwg XREF: I:\ENVIRON\28055\survey\arcplan.dwg
 XREF: I:\ENVIRON\library\seal\sealcpw.dwg
 XREF: I:\ENVIRON\28066\SEWER\PIRBB002.dwg, ON: ARCPLAN, I:\ENVIRON\28066\survey\arcplan.dwg, ON: SEALCPW, I:\ENVIRON\library\seal\sealcpw.dwg, ON:
 attached xref's are: PIRBB002, I:\ENVIRON\28066\SEWER\PIRBB002.dwg, ON: ARCPLAN, I:\ENVIRON\28066\survey\arcplan.dwg, ON: SEALCPW, I:\ENVIRON\library\seal\sealcpw.dwg, ON:

I:\ENVIRON\28066\SEWER\SH_T_8.dwg
 Tuesday, August 22, 2000
 11:11:38 AM RMcClellan
 Plot Scale: 1:1 i:\plot\clr-wdth.pen

VERIFY SCALES	SYMBOL	REVISIONS	BY	DATE	APPROVED
BAR IS ONE INCH ON ORIGINAL DRAWING.		RECORD DRAWING	RWM	1/7/00	HED
0 — 1"					
IF NOT ONE INCH ON THIS SHEET, ADJUST SCALES ACCORDINGLY.					



DESIGNER C. WAITE
 DRAFTING McCLELLAN
 PROJ. ENGR. C. WAITE
 PROJ. MGR. H. DUNGAN
 BY Carlton P. Waite
 DATE MARCH 12, 1998

HNTB
 ARCHITECTS ENGINEERS PLANNERS
 HNTB CORPORATION
 111 Monument Circle, Indianapolis, Indiana 46204-5178

JOB NO.
 28066-DS
 001-001
 DATE
 3-11-98

TOWN OF ARCADIA, INDIANA
 PHASE 1 MAIN STREET COMBINED SEWER SEPARATION PROJECT
 TRAFFIC CONTROL PLAN
 STATE ROAD 19

SHEET NO.
 8
 8 of 8

RECORD DRAWING
 WARNING: This is part of a record document. Record documents are based on reports submitted by others. HNTB cannot assume nor assume responsibility or liability for the accuracy of record documents. Users of record documents are cautioned and advised to obtain independent verification of actual conditions.